



INDIAN SCHOOL SOHAR
TERM I EXAMINATION (2019-20)
SUBJECT: SCIENCE

CLASS: VIII

Max. Marks: 80

DATE: 26 /09/2019

Duration: 3Hrs

General Instructions :-

- i. The Question paper consists of **36** questions comprising three Sections- **A, B & C**.
- ii. **All** questions are compulsory.
- iii. Internal choice is given in Sections- **B and C**.
- iv. Question numbers **1 to 20** in Section-**A** are of **one** mark each.
(Q **1 to 10**-MCQ, **11 to 19**- very short answer type to be answered in one word or one sentence and Q.20 -assertion & reasoning type)
- v. Question numbers **21 to 30** in Section-**B** are **three** marks each. These are to be answered in about 50 words.
- vi. Question numbers **31 to 36** in Section-**C** are **five** marks each. These are to be answered in about 70 words.
- vii. There is no overall choice. However an internal choice is provided in question number 25,26,28 & 30 of **3** marks and question number 34, 35 & 36 of **5** marks. Attempt only one of the choices in such questions.

SECTION-A

Choose the most appropriate answer-

1. Which one of the following is a national park? 1
 a) Kaziranga b) Pachmari c) Bori d) Lockchao
2. The plastic which is coated on the uniforms of firemen is 1
 a) bakelite b) PVC c) teflon d) melamine
3. Pick out a common preservative. 1
 a) streptomycin b) sodium benzoate c) ammonium sulphate d) tetracycline
4. Name the practice of growing legumes and wheat in succession on a same piece of land. 1
 a) field fallowing b) crop rotation c) mixed cropping d) transplantation
5. Which of the following represents the correct match for items in column A with those in column B ? 1

	A	B
1	I Typhoid	(i) Virus
	II Chicken pox	(ii) Protozoa
	III Malaria	(iii) Bacteria

a) I- (ii) , II- (iii) ,III- (i) b) I-(iii) , II- (i), III-(ii) c) I-(ii) ,II-(i), III-(iii) d) I-(i) ,II-(ii), III-(iii)
6. What type of combustion will take place if a fuel has an ignition temperature lower than the average room temperature ? 1
 a) Rapid b) slow c) spontaneous d) explosion
7. The fraction of petroleum used for dry cleaning is: 1
 a) Petrol b) kerosene c) bitumen d) lubricating oil

8. In the list of animals given below, hen is the odd one . Find out the most suitable reason.
Humans, cow, hen, dog. 1
- a) it undergoes internal fertilization b) it is viviparous
c) it undergoes external fertilization d) it is oviparous
9. The substance which does not vapourise on burning is : 1
- a) molten wax b) kerosene c) coal d) camphor
10. In humans, what is embedded in the uterine wall after fertilization? 1
- a) Ovum b) embryo c) foetus d) zygote
- Answer the following questions -
11. What is a polymer? 1
12. Which gas is produced when metals react with acids? What happens when a burning matchstick is brought near the gas? 1
13. Classify natural resources on the basis of their availability in nature . 1
14. How is reproduction in hydra different from that in amoeba? 1
15. To which category of microbes, do the following organisms belong to ? 1
- a) Penicillium b) Spirogyra
16. Name the reproductive organs responsible for the following functions in humans- 1
- a) Production of sperms b) site of fertilization
17. Give any two examples which indicate that nylon fibres are very strong. 1
18. Show the four sequential stages in the life cycle of silkworm. 1
19. Solution of which of the following oxides in water will change the colour of blue litmus to red? 1
- Magnesium oxide, zinc oxide, Sulphur dioxide, sodium oxide, carbon dioxide
20. Assertion and Reasoning- 1
- In the following question, a statement of assertion (A) & a corresponding statement of reason (R) are given.
1. Assertion (A): Deposits of petroleum & natural gas are found above water.
2. Reason (R) : Oil & gas are lighter than water.
- Q. Choose the most appropriate option-
- a) Both A & R are true but R is not the correct explanation of A.
b) Both A & R are true and R is the correct explanation of A.
c) A is true but R is false. d) A is false but R is true. e) Both A & R are false.

SECTION B

21. Compare Aluminium and Sulphur, on the basis of the following properties- 3
- i) Physical state ii) conductivity c) malleability

22. a) What advantage does amoeba derive by changing shape? (2 points) 3
 Give an example of another cell which exhibits the same property.
 b) Name the green plastid present in plant cells. Write its function.
23. a) Is it safe to drink pasteurized milk without boiling? Why? 3
 b) How is milk pasteurized? c) Who discovered pasteurization?
24. Represent the following reactions in the form of chemical equations- 3
 a) Magnesium with oxygen b) Sulphur dioxide with water c) Zinc with Copper Sulphate
25. Mention the main difference between thermoplastics and thermosetting plastics. 3
 Give one example for each.

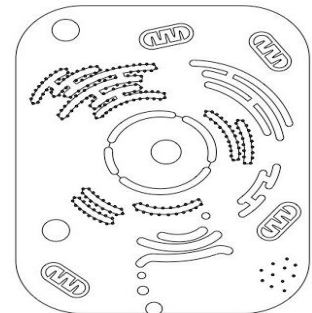
OR

- a) How is rayon different from other synthetic fibres?
 b) Draw figures showing linear and cross-linked arrangement of units in plastics.
26. Why is disposal of plastics a major concern. (3 points) 3

OR

How can you contribute towards reducing the use of plastic materials? Suggest any 3 measures.

27. Observe the given figure and answer the following questions-



3

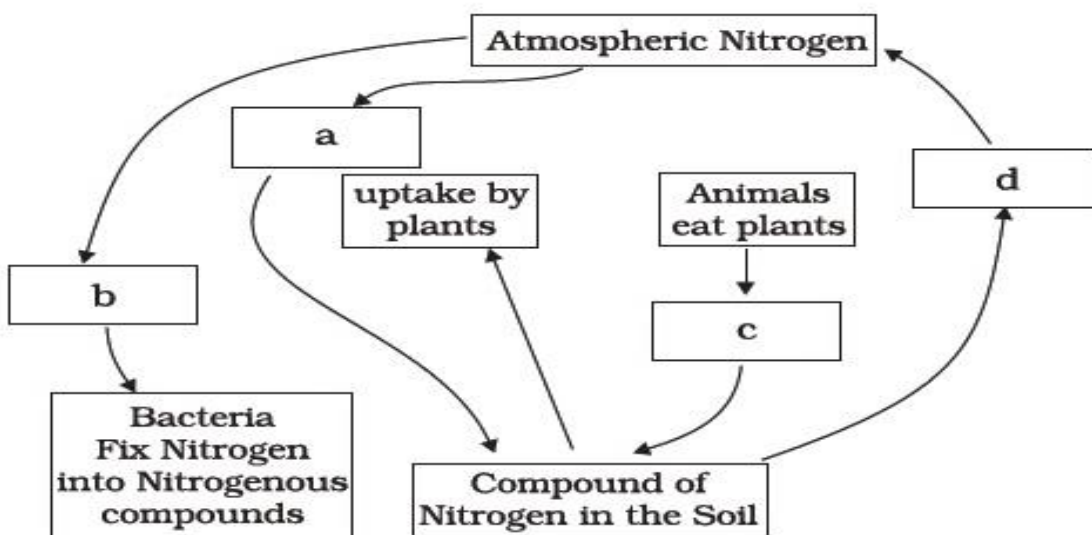
- a. Does it represent a plant cell or an animal cell?
 b. Identify the given cell as prokaryotic or eukaryotic.
 c. What is called the living substance of the cell?
 d. Name the outermost layer of the given cell. Write its function.

28. How do vaccines work? Explain.

OR

3

- a) State the role of yeast in increasing the volume of kneaded dough.
 b) Complete the following figure of nitrogen cycle by filling the blanks – a, b, c and d.



29. a) State any two characteristics of a good fuel. 3
b) In an experiment, 70000 KJ of energy was produced on burning 3.5 kg of fuel.
Find out the calorific value of the fuel.

30. Justify the following statements: - 3
a) Saving paper means saving trees. b) In order to meet the ever increasing demand of timber in factories and for shelter, trees are continually cut.

OR

Explain how deforestation leads to a) lowering of ground water level b) global warming.

SECTION C

31. a) What are endemic species? Name the endemic flora and fauna of Pachmari Biosphere Reserve. (1 each) 5
b) What is Red Data Book?
c) Why is "Satpura Tiger Reserve" unique?
d) What objective can be achieved through "Forest Conservation Act" other than preservation and conservation of natural resources?

32. Compare any 2 features of the three distinct zones of a candle flame. Draw labelled diagram. 5

33. a) We should use fossil fuels only when it is absolutely necessary. Justify. (3 points) 5
b) State the characteristics and uses of coke. (2 each)

34. a) Define the term - Tissue. 5
b) Why is an additional outer thick layer present in plant cells? Explain.
c) What is the basic difference between the functioning of single celled and multi celled organisms?

OR

- a) What are the components of nucleus? (Any 3) Write their functions.
b) Make a sketch of the human nerve cell. What function do nerve cells perform?
35. Explain the stages of development of the fertilized egg into foetus in humans. 5

OR

Describe the steps of formation of a chick from the zygote.

36. a) Why is irrigation important for growing crops? (3 points) 5
b) What are the two factors to be considered while determining the time and frequency of irrigation?

c) Name any 2 modern and economical methods of irrigation.

OR

- a) Mention any 3 advantages of ploughing the fields.
b) Categorize the given crops as rabi or kharif :-
Pea, cotton, paddy, mustard.