



INDIAN SCHOOL SOHAR
PERIODIC TEST-I (2023 – 24)
SUBJECT: SCIENCE
CLASS- V

SET –A

Date of Exam: 24-05-2023

Time Allotted: 40minutes

Max. Marks: 20

(Note: This question paper consists of 4 printed pages. Please check that you have all the pages.)

Q1. Choose the correct answer for the following:

(1 × 5=5)

i. Which structure serves as the source of nutrition for the newly developing plant?

- A) Root
B) Seed leaves
C) Seed coat
D) Stem

ii. How are cotton and maple seeds dispersed?

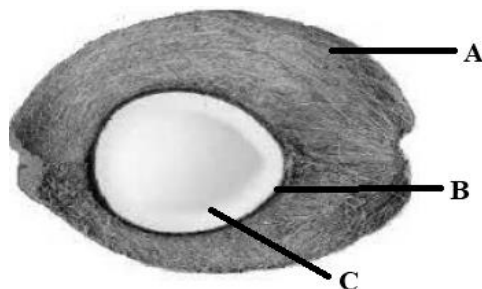
- A) By air
B) By animals
C) By water
D) By explosion

iii. Identify the CORRECT statements about the plant reproduction.

- a. Adequate air, water, soil and temperature are required to reproduce.
b. Ferns, mosses and fungi reproduce through spores.
c. Tiny plantlets grow along the edges of the money plant.
d. All plants reproduce only through seeds.

- A) Statements c and b
B) Statements d and a
C) Statements b and d
D) Statements a and b

iv. Which part of the coconut seed enables it to float in water?



- A) C
B) A
C) B and C
D) A and B

v. Identify the plant that gives rise to a new plant from its leaf.

A) Money plant

B) Hibiscus

C) Rose

D) Bryophyllum

Q2. There are two statements marked as Assertion (A) and Reason (R). Choose

the correct answer as per the options provided below:

(1 × 2=2)

A) Both A and R are true, and R is the correct explanation of A.

B) Both A and R are true, and R is the not the correct explanation of A.

C) A is true but R is false.

D) A is false but R is true.

i. **Assertion (A):** Dry seeds do not germinate.

Reason(R): Water is the most important factor for seed germination.

ii. **Assertion (A):** Use of fertilizers enhances the crop productivity.

Reason(R): Irrigation is very important for proper growth.

Q3. Define the following terms:

(1 × 3=3)

i. Seed dispersal



ii. Germination

iii. Crops

Q4. Answer the following:

(2 × 2=4)

i. Complete the stages (2 and 4) of the seed germination by drawing and describing it.

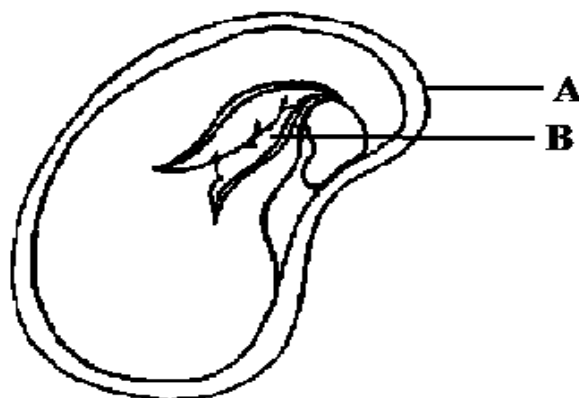
	<p style="text-align: center;">?</p>		<p style="text-align: center;">?</p>
<p style="text-align: center;">Stage 1</p> <p>Seed gets air, water and warmth</p>	<p style="text-align: center;">Stage 2 __?__</p>	<p style="text-align: center;">Stage 3</p> <p>Baby plant soon develops a shoot</p>	<p style="text-align: center;">Stage 4 __?__</p>

ii. State the ways by which these plants reproduce and give an example of each.



OR

Name the parts (**A** and **B**) of the seed structure and write its function.



Q5. Do as directed:

(3 × 2=6)

i. Complete the flowchart of the stages of agriculture.

a. Ploughing the soil.
b. _____?
c. Sowing good quality seeds for growing good crops.
d. _____?
e. _____?
f. Once the crop is ripe, it is harvested and then stored properly.

ii. Read the passage and answer the following questions.

Growing plants is important as our life depends largely on them. Every plant grows in unique condition, seasons and places. They even go through different stages of germination and make more plants or reproduce through different parts of the plant.

a. Give an example of a plant that grows well in:

1. Clayey soil
2. Black soil

b. Give a seasonal difference in the harvest of Kharif and Rabi crops.

c. Farmers grow jowar in sandy soil. Give reason



INDIAN SCHOOL SOHAR
PERIODIC TEST –I (2023 – 24)
SUBJECT: SCIENCE
CLASS- V

SET –B

Date of Exam: 24-05-2023

Time Allotted: 40minutes

Max. Marks: 20

(Note: This question paper consists of 4 printed pages. Please check that you have all the pages.)

Q1. Choose the correct answer for the following:

(1 × 5=5)

i. How are coconut and lotus seeds dispersed?

A) By air

B) By animals

C) By water

D) By explosion

ii. Which structure serves as the source of nutrition for the newly developing plant?

A) Root

B) Seed leaves

C) Seed coat

D) Stem

iii. Identify the CORRECT statements about the plant reproduction.

a. Adequate air, water, soil and temperature are required to reproduce.

b. Ferns, mosses and fungi reproduce through spores.

c. Tiny plantlets grow along the edges of the money plant.

d. All plants reproduce only through seeds.

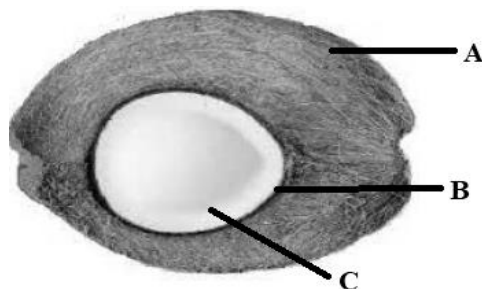
A) Statements c and b

B) Statements d and a

C) Statements d and b

D) Statements a and b

iv. Which part of the coconut seed enable it to float in water?



A) C

B) A

C) B and C

D) A and B

v. Identify the plant that can be grown through leaves?

A) Money plant

B) Hibiscus

C) Rose

D) Bryophyllum

Q2. There are two statements marked as Assertion (A) and Reason (R). Choose the correct answer as per the options provided below: (1 × 2=2)

A) Both A and R are true, and R is the correct explanation of A.

B) Both A and R are true, and R is the not the correct explanation of A.

C) A is true but R is false.

D) A is false but R is true.

i. **Assertion (A):** Dry seeds do not germinate.

Reason(R): Water is the most important factor for seed germination.

ii. **Assertion (A):** Fertilizers are not important for growing healthy crops.

Reason(R): Irrigation is very important for plant growth.

Q3. Define the following terms: (1 × 3=3)

i. Seed dispersal



ii. Germination

iii. Crops

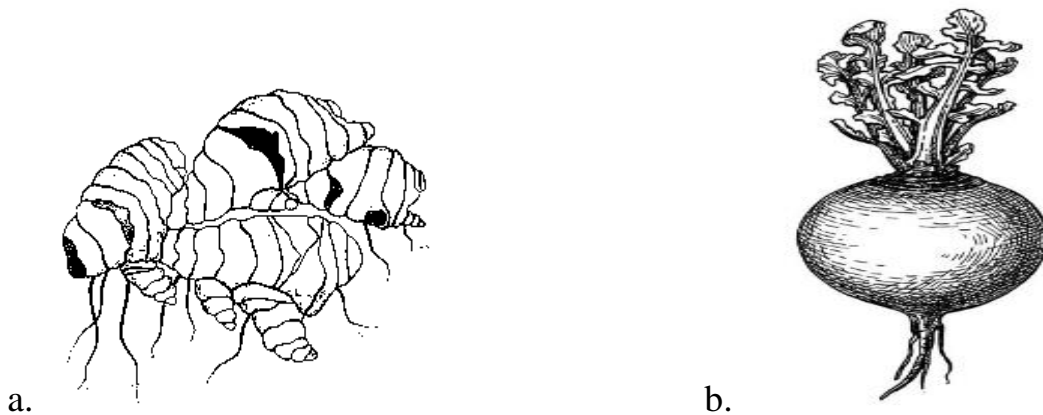
Q4. Answer the following:

(2 × 2=4)

i. Complete the stages (2 and 4) of the seed germination by drawing and describing it.

	<p style="text-align: center;">?</p>		<p style="text-align: center;">?</p>
<p style="text-align: center;">Stage 1</p> <p>Seed gets air, water and warmth</p>	<p style="text-align: center;">Stage 2 __?__</p>	<p style="text-align: center;">Stage 3</p> <p>Baby plant soon develops a shoot</p>	<p style="text-align: center;">Stage 4 __?__</p>

ii. State the ways by which these plants reproduce and give an example of each.



OR

Name the parts (**A** and **B**) of the seed structure and write its function.



Q5. Do as directed:

(3 × 2=6)

i. Read the passage and answer the following questions.

Growing plants is important as our life depends largely on them. Every plant grows in unique condition, seasons and places. They even go through different stages of germination and make more plants or reproduce through different parts of the plant.

a. Give an example of a plant that grows well in:

- 1. Sandy soil
- 2. Black soil

b. Give a seasonal difference in the harvest of Kharif and Rabi.

c. Tea plantation is commonly grown in hill slopes. Give reason

ii. Complete the flowchart of the stages of agriculture.

a. Ploughing the soil.
b. _____?
c. Sowing good quality seeds for growing good crops.
d. _____?
e. _____?
f. Once the crop is ripe, it is harvested and then stored properly.
